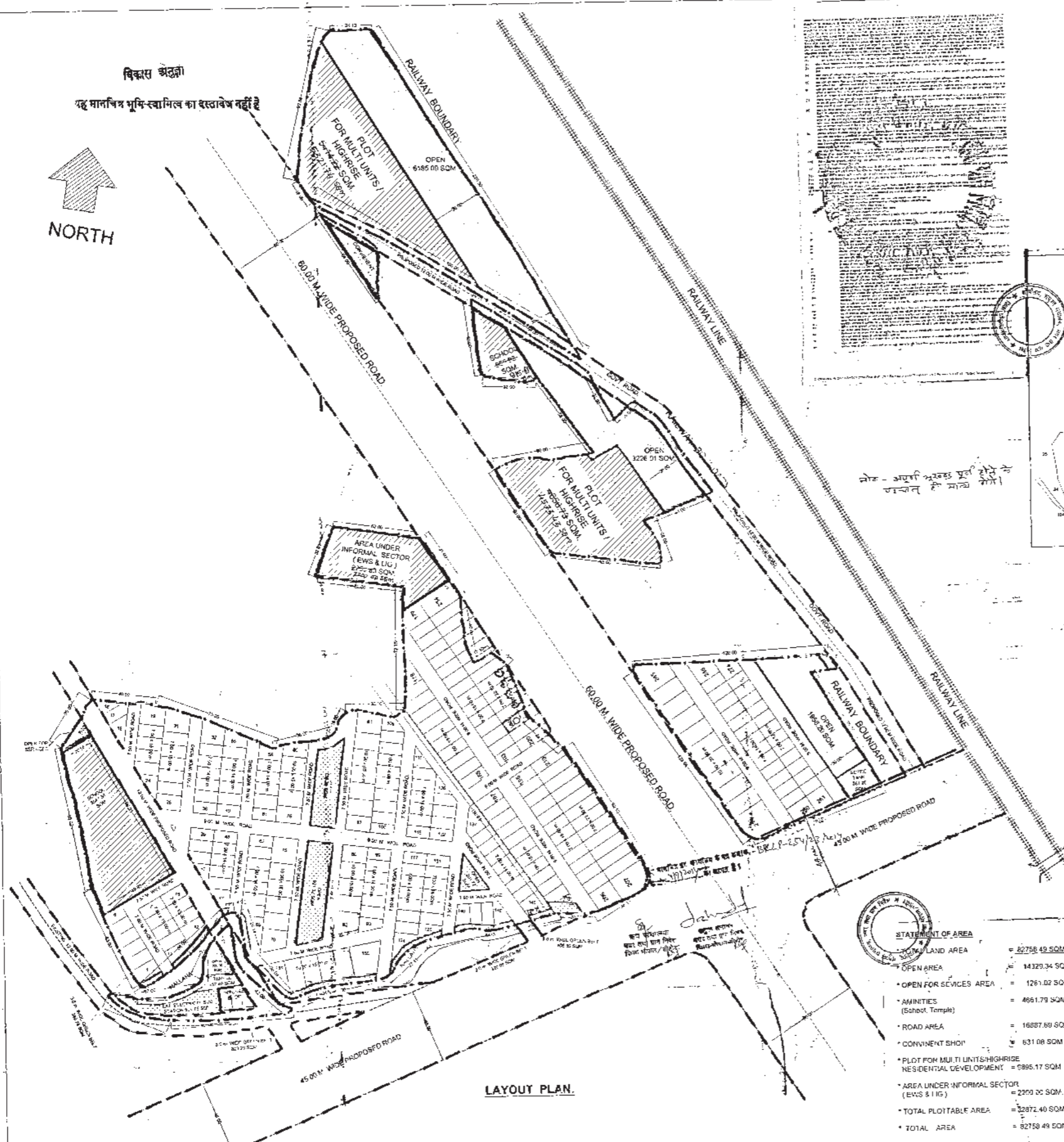


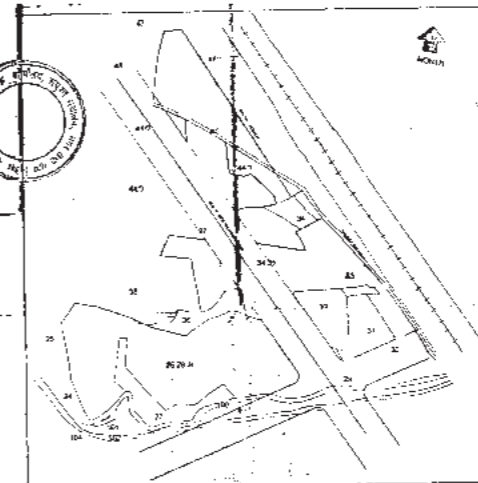
विकास अंतर्गत

यह मानचित्र भूमिस्वामिका के हस्ताक्षर तहत है



हस्ताक्षरित मानचित्र में निम्नलिखित बिंदुओं पर ध्यान देना चाहिए -
1. मानचित्र में दर्शाए गए सभी माप और क्षेत्रफल सटीक हैं।
2. मानचित्र में दर्शाए गए सभी निकास और सेवाएं उपलब्ध हैं।
3. मानचित्र में दर्शाए गए सभी नियम और शर्तें लागू हैं।
4. मानचित्र में दर्शाए गए सभी अधिकार और जिम्मेदारियां स्पष्ट हैं।

नोट - अक्षरों में बदलने से
जानबूझ के कारण भूलें



KHASRA MAP
KHASRA BREAK UP

S.No.	Khasra Number's	Area (in hect.)	Owner's Name
1	26,28,36/1,2	0.150	M/s. Aakriti
2	26,28,36/3	0.150	Dwelling Plot
3	26,28,36/4	0.150	Ed. District
4	26,28,36/5	0.150	Shri. Magesh
5	26,28,36/6	0.150	Sonia S/o. Smt. P. D. Sonu
6	26,28,36/7	0.150	
7	26,28,36/8	0.150	
8	26,28,36/9	0.150	
9	26,28,36/10	0.150	
10	26,28,36/11	0.150	
11	26,28,36/12	0.150	
12	26,28,36/13	0.150	
13	26,28,36/14	0.150	
14	26,28,36/15	0.150	
15	26,28,36/16	0.150	
16	26,28,36/17	0.150	
17	26,28,36/18	0.150	
18	26,28,36/19	0.150	
19	26,28,36/20	0.150	
20	26,28,36/21	0.150	
21	26,28,36/22	0.150	
22	26,28,36/23	0.150	
23	26,28,36/24	0.150	
24	26,28,36/25	0.150	
25	26,28,36/26	0.150	
Total Area		3.750	

LAYOUT PLAN.

STATEMENT OF AREA

- TOTAL PLOTTABLE AREA = 82758.49 SQM (20.45 ACRES)
- OPEN AREA = 14329.34 SQM (3.51%)
- OPEN FOR SERVICES AREA = 1261.02 SQM (1.55%)
- AMENITIES (School, Temple) = 4661.79 SQM (5.65%)
- ROAD AREA = 16887.80 SQM (20.41%)
- CONVENIENT SHOP = 631.08 SQM (0.76%)
- PLOT FOR MULTI UNITS/HIGHRISE RESIDENTIAL DEVELOPMENT = 9895.17 SQM (11.96%)
- AREA UNDER INFORMAL SECTOR (EWS & LG) = 2200.00 SQM (2.66%)
- TOTAL PLOTTABLE AREA = 82872.40 SQM (20.47%)
- TOTAL AREA = 82758.49 SQM (100%)

HOUSES PROVIDED FOR WEAKER SECTION

MULTI UNITS RESIDENTIAL DEVELOPMENT = 9895.17 SQM
 MAXIMUM UNITS PERMISSIBLE = 248 (BAY 255 NOS.)
 PLOT DEVELOPMENT TOTAL PLOTS = 273 PLOTS
 (EQUALLY @ 28 DUS / PLOT) = 7644 DUS
 TOTAL L.I.G. PROPOSED (248 + 7644) = 7892 DUS
 (1.43 ACRES)
 TOTAL EWS UNITS REQUIRED @ 45% of total number of units
 (TOTAL DUS x 0.15 x 0.001)
 = 971 x 0.15 x 0.001
 = 145.65 NOS.
 = 145 NOS.
 AREA OF EACH EWS UNIT = 25.00 SQM
 TOTAL BUILD UP AREA = 3625.00 SQM
 = 2000.00 SQM
 = 1625 NOS.
 AREA OF EACH L.I.G. UNIT = 35.00 SQM
 TOTAL BUILD UP AREA = 9625.00 SQM
 = 2888.00 SQM
 = 274 NOS.
 TOTAL PROPOSED UNITS @ 35 DUS EACH
 PLOT AREA PROPOSED = 2266.00 SQM
 TOTAL BUILD UP AREA PROPOSED FOR L.I.G. & EWS = 2200 + 2005 SQM = 4205 SQM

OLD PCRN-SS/ON No. 247 / LP 045 / 29 / TCP / DO / 2009 Bhopal, Dated 30 / 05 / 2009
DENARGATION NO. : 27 / LP 045 / 29 / TCP / DO / 2010 Bhopal, Dated 27 / 01 / 2011

PROPOSED LAYOUT PLAN FOR PROPOSED RESIDENTIAL DEVELOPMENT ON KHASRA NO. - (1) 26,28,36/1, (2) 26,28,36/2, (3) 26,28,36/3, (4) 26,28,36/4, (5) 26,28,36/5, (6) 26,28,36/6, (7) 26,28,36/7, (8) 26,28,36/8, (9) 26,28,36/9, (10) 26,28,36/10, 27/1, (11) 26,28,36/11, 27/2, (12) 26,28,36/12, 27/3, (13) 26,28,36/13, 27/4, (14) 26,28,36/14, 27/5, (15) 26,28,36/15, 27/6, 101/1, 101/2, (16) 26,28,36/16, 27/7, 101/3, (17) 26,28,36/17, 27/8, 101/4, (18) 26,28,36/18, 27/9, 101/5, (19) 26,28,36/19, 27/10, 101/6, 29, 30/1, 31/1, 32/2/1, (20) 26,28,36/20, 27/10, 101/6, 29, 30/1, 31/1, 32/2/1, (21) 26,28,36/21, 27/10, 101/6, 29, 30/1, 31/1, 32/2/2, (22) 26,28,36/22, 27/10, 101/6, 29, 30/1, 31/1, 32/2/2, (23) 26,28,36/23, 27/10, 101/6, 29, 30/1, 31/1, 32/2/3, (24) 26,28,36/24, 27/10, 101/6, 29, 30/1, 31/1, 32/2/4, (25) 26,28,36/25, 27/10, 101/6, 29, 30/1, 31/1, 32/2/5, (26) 26,28,36/26, 27/10, 101/6, 29, 30/1, 31/1, 32/2/6, (27) 26,28,36/27, 27/10, 101/6, 29, 30/1, 31/1, 32/2/7, (28) 26,28,36/28, 27/10, 101/6, 29, 30/1, 31/1, 32/2/8, (29) 26,28,36/29, 27/10, 101/6, 29, 30/1, 31/1, 32/2/9, (30) 26,28,36/30, 27/10, 101/6, 29, 30/1, 31/1, 32/2/10, (31) 26,28,36/31, 27/10, 101/6, 29, 30/1, 31/1, 32/2/11, (32) 26,28,36/32, 27/10, 101/6, 29, 30/1, 31/1, 32/2/12, (33) 26,28,36/33, 27/10, 101/6, 29, 30/1, 31/1, 32/2/13, (34) 26,28,36/34, 27/10, 101/6, 29, 30/1, 31/1, 32/2/14, (35) 26,28,36/35, 27/10, 101/6, 29, 30/1, 31/1, 32/2/15, (36) 26,28,36/36, 27/10, 101/6, 29, 30/1, 31/1, 32/2/16, (37) 26,28,36/37, 27/10, 101/6, 29, 30/1, 31/1, 32/2/17, (38) 26,28,36/38, 27/10, 101/6, 29, 30/1, 31/1, 32/2/18, (39) 26,28,36/39, 27/10, 101/6, 29, 30/1, 31/1, 32/2/19, (40) 26,28,36/40, 27/10, 101/6, 29, 30/1, 31/1, 32/2/20, (41) 26,28,36/41, 27/10, 101/6, 29, 30/1, 31/1, 32/2/21, (42) 26,28,36/42, 27/10, 101/6, 29, 30/1, 31/1, 32/2/22, (43) 26,28,36/43, 27/10, 101/6, 29, 30/1, 31/1, 32/2/23, (44) 26,28,36/44, 27/10, 101/6, 29, 30/1, 31/1, 32/2/24, (45) 26,28,36/45, 27/10, 101/6, 29, 30/1, 31/1, 32/2/25, (46) 26,28,36/46, 27/10, 101/6, 29, 30/1, 31/1, 32/2/26, (47) 26,28,36/47, 27/10, 101/6, 29, 30/1, 31/1, 32/2/27, (48) 26,28,36/48, 27/10, 101/6, 29, 30/1, 31/1, 32/2/28, (49) 26,28,36/49, 27/10, 101/6, 29, 30/1, 31/1, 32/2/29, (50) 26,28,36/50, 27/10, 101/6, 29, 30/1, 31/1, 32/2/30, (51) 26,28,36/51, 27/10, 101/6, 29, 30/1, 31/1, 32/2/31, (52) 26,28,36/52, 27/10, 101/6, 29, 30/1, 31/1, 32/2/32, (53) 26,28,36/53, 27/10, 101/6, 29, 30/1, 31/1, 32/2/33, (54) 26,28,36/54, 27/10, 101/6, 29, 30/1, 31/1, 32/2/34, (55) 26,28,36/55, 27/10, 101/6, 29, 30/1, 31/1, 32/2/35, (56) 26,28,36/56, 27/10, 101/6, 29, 30/1, 31/1, 32/2/36, (57) 26,28,36/57, 27/10, 101/6, 29, 30/1, 31/1, 32/2/37, (58) 26,28,36/58, 27/10, 101/6, 29, 30/1, 31/1, 32/2/38, (59) 26,28,36/59, 27/10, 101/6, 29, 30/1, 31/1, 32/2/39, (60) 26,28,36/60, 27/10, 101/6, 29, 30/1, 31/1, 32/2/40, (61) 26,28,36/61, 27/10, 101/6, 29, 30/1, 31/1, 32/2/41, (62) 26,28,36/62, 27/10, 101/6, 29, 30/1, 31/1, 32/2/42, (63) 26,28,36/63, 27/10, 101/6, 29, 30/1, 31/1, 32/2/43, (64) 26,28,36/64, 27/10, 101/6, 29, 30/1, 31/1, 32/2/44, (65) 26,28,36/65, 27/10, 101/6, 29, 30/1, 31/1, 32/2/45, (66) 26,28,36/66, 27/10, 101/6, 29, 30/1, 31/1, 32/2/46, (67) 26,28,36/67, 27/10, 101/6, 29, 30/1, 31/1, 32/2/47, (68) 26,28,36/68, 27/10, 101/6, 29, 30/1, 31/1, 32/2/48, (69) 26,28,36/69, 27/10, 101/6, 29, 30/1, 31/1, 32/2/49, (70) 26,28,36/70, 27/10, 101/6, 29, 30/1, 31/1, 32/2/50, (71) 26,28,36/71, 27/10, 101/6, 29, 30/1, 31/1, 32/2/51, (72) 26,28,36/72, 27/10, 101/6, 29, 30/1, 31/1, 32/2/52, (73) 26,28,36/73, 27/10, 101/6, 29, 30/1, 31/1, 32/2/53, (74) 26,28,36/74, 27/10, 101/6, 29, 30/1, 31/1, 32/2/54, (75) 26,28,36/75, 27/10, 101/6, 29, 30/1, 31/1, 32/2/55, (76) 26,28,36/76, 27/10, 101/6, 29, 30/1, 31/1, 32/2/56, (77) 26,28,36/77, 27/10, 101/6, 29, 30/1, 31/1, 32/2/57, (78) 26,28,36/78, 27/10, 101/6, 29, 30/1, 31/1, 32/2/58, (79) 26,28,36/79, 27/10, 101/6, 29, 30/1, 31/1, 32/2/59, (80) 26,28,36/80, 27/10, 101/6, 29, 30/1, 31/1, 32/2/60, (81) 26,28,36/81, 27/10, 101/6, 29, 30/1, 31/1, 32/2/61, (82) 26,28,36/82, 27/10, 101/6, 29, 30/1, 31/1, 32/2/62, (83) 26,28,36/83, 27/10, 101/6, 29, 30/1, 31/1, 32/2/63, (84) 26,28,36/84, 27/10, 101/6, 29, 30/1, 31/1, 32/2/64, (85) 26,28,36/85, 27/10, 101/6, 29, 30/1, 31/1, 32/2/65, (86) 26,28,36/86, 27/10, 101/6, 29, 30/1, 31/1, 32/2/66, (87) 26,28,36/87, 27/10, 101/6, 29, 30/1, 31/1, 32/2/67, (88) 26,28,36/88, 27/10, 101/6, 29, 30/1, 31/1, 32/2/68, (89) 26,28,36/89, 27/10, 101/6, 29, 30/1, 31/1, 32/2/69, (90) 26,28,36/90, 27/10, 101/6, 29, 30/1, 31/1, 32/2/70, (91) 26,28,36/91, 27/10, 101/6, 29, 30/1, 31/1, 32/2/71, (92) 26,28,36/92, 27/10, 101/6, 29, 30/1, 31/1, 32/2/72, (93) 26,28,36/93, 27/10, 101/6, 29, 30/1, 31/1, 32/2/73, (94) 26,28,36/94, 27/10, 101/6, 29, 30/1, 31/1, 32/2/74, (95) 26,28,36/95, 27/10, 101/6, 29, 30/1, 31/1, 32/2/75, (96) 26,28,36/96, 27/10, 101/6, 29, 30/1, 31/1, 32/2/76, (97) 26,28,36/97, 27/10, 101/6, 29, 30/1, 31/1, 32/2/77, (98) 26,28,36/98, 27/10, 101/6, 29, 30/1, 31/1, 32/2/78, (99) 26,28,36/99, 27/10, 101/6, 29, 30/1, 31/1, 32/2/79, (100) 26,28,36/100, 27/10, 101/6, 29, 30/1, 31/1, 32/2/80, (101) 26,28,36/101, 27/10, 101/6, 29, 30/1, 31/1, 32/2/81, (102) 26,28,36/102, 27/10, 101/6, 29, 30/1, 31/1, 32/2/82, (103) 26,28,36/103, 27/10, 101/6, 29, 30/1, 31/1, 32/2/83, (104) 26,28,36/104, 27/10, 101/6, 29, 30/1, 31/1, 32/2/84, (105) 26,28,36/105, 27/10, 101/6, 29, 30/1, 31/1, 32/2/85, (106) 26,28,36/106, 27/10, 101/6, 29, 30/1, 31/1, 32/2/86, (107) 26,28,36/107, 27/10, 101/6, 29, 30/1, 31/1, 32/2/87, (108) 26,28,36/108, 27/10, 101/6, 29, 30/1, 31/1, 32/2/88, (109) 26,28,36/109, 27/10, 101/6, 29, 30/1, 31/1, 32/2/89, (110) 26,28,36/110, 27/10, 101/6, 29, 30/1, 31/1, 32/2/90, (111) 26,28,36/111, 27/10, 101/6, 29, 30/1, 31/1, 32/2/91, (112) 26,28,36/112, 27/10, 101/6, 29, 30/1, 31/1, 32/2/92, (113) 26,28,36/113, 27/10, 101/6, 29, 30/1, 31/1, 32/2/93, (114) 26,28,36/114, 27/10, 101/6, 29, 30/1, 31/1, 32/2/94, (115) 26,28,36/115, 27/10, 101/6, 29, 30/1, 31/1, 32/2/95, (116) 26,28,36/116, 27/10, 101/6, 29, 30/1, 31/1, 32/2/96, (117) 26,28,36/117, 27/10, 101/6, 29, 30/1, 31/1, 32/2/97, (118) 26,28,36/118, 27/10, 101/6, 29, 30/1, 31/1, 32/2/98, (119) 26,28,36/119, 27/10, 101/6, 29, 30/1, 31/1, 32/2/99, (120) 26,28,36/120, 27/10, 101/6, 29, 30/1, 31/1, 32/2/100. TOTAL AREA = 8.280 HECTOAR AT VILLAGE-M/SROD, TEHSIL, HUZUR, BHOPAL (M.P.) BELONG TO M/S AAKRITI DWELLINGS PVT. LTD. BHOPAL

DEVELOPER :

M/S. AGRICULTURE LIMITED
AGS VENTURES LTD.
(FORMALLY KNOWN AS
M/S. AAKRITI DWELLINGS PVT. LTD.)

SCALE :

1 : 1000
DWG. NO. : TCP 04

DATE :

11-06-2014

ARCHITECT :

[Signature]